



The Adventure of a Lifetime

## **THE PAKARAIMA MOUNTAIN SAFARI NO. 7 (2009)**

**Duration:** Approx. 5 days & 4 nights (one leg)

**Attractions:** Adventure, excitement, thrill, camping, wildlife, sightseeing, serenity, interaction with nature, cultural diversities

**Price range:** USD 595./person (inclusive of transportation, accommodation, meals, light refreshments, all entrance fees & air fare)

The Pakaraima Mountain Safari (PMS), the adventure of a lifetime, entails traveling via 4\*4 vehicles across Guyana's Administrative Regions 4,8,9 and 10, starting below sea level and reaching approximately 3,800 ft above sea level. The journey takes approximately 4-5 days through unfriendly terrain, covering over 600 miles, passing more than 25 Amerindian Villages before reaching its destination, Orinduik Falls. The PMS offers some of the most beautiful geological features to be experienced in the Guiana's. This frontier is blessed with a wide range of flora and fauna and the rich history of our indigenous people are evident throughout the regions.

Additionally, participants will be able to visit Kaieteur Falls via aircraft flying in to join the return leg of the PMS and those returning to Georgetown from the first leg.

### **GENERAL ADVISORY**

- ❖ All transportation arrangement will be the onus of the Tour Operator
- ❖ The Regional facilities will be made available for outdoor sleeping, however it will be best to pack the following for outdoor sleeping:
  - Tents
  - Sleeping bags
  - Small tarp poling
  - Folding cots
  - Other appropriate sleeping equipment

- ❖ Washroom facilities will be those available at the schools and other regional facilities in the areas of sleepover.
- ❖ Permissions for entry to Amerindian reservations will be arranged by the Organizers.
- ❖ All participants of the Safari area advised to be respectful of local cultures and to display a sense of discipline in Amerindian Communities.



## **GEORGETOWN to KARASABAI**

- ❖ Main Street to Linden
- ❖ Linden to Kurupakari Ferry crossing
- ❖ Kurupakari to Annai
- ❖ Annai to Karasabai

## **RETURN LEG OF THE SAFARI**

- ❖ Orinduik to Kato
- ❖ Kato to Monkey Mt
- ❖ Monkey Mt to Karasabai
- ❖ Karasabai to Georgetown

Attractions on the way to Karasabai and the return from Orinduik:

- Linden - the mining town
- Mabura - entry of the forest belt
- The Demerara Woods concession
- Kurupakari Cattle trails, petroglyphs
- Fairview – Amerindian Village (historical artifacts)
- Annai – Rockview
- The Iwokrama Canopy Walkway
- Surama Village
- North Rupununi Savannahs
- Orinduik Falls
- Kaieteur Falls

We will be passing through a number of other Amerindian Villages in the North Rupununi District.

## TOTAL ESTIMATED TIME FRAME

DATE	FROM	TO	AVERAGE TIME
Wednesday, Feb 25	Georgetown	Karasabai	1 day
Thursday, Feb 26– Saturday, Feb 28	Karasabai	Orinduik	3 days
Sunday, Mar 1 – Mar 4	Orinduik	Georgetown	4 days

## ITINERARY

DATE	ACTIVITY	TIME
<b>DAY 1 –WEDNESDAY FEB 25<sup>TH</sup>, 2009</b>	<p>Depart Georgetown Arrive Kurupakari Arrive Oasis (Annai)</p> <p>Arrive Karasabai</p> <p><b>OVERNIGHT</b></p>	<p>01.00 hrs 07.00 hrs 10.00 hrs 15.00 hrs</p>
<b>DAY 2 – THURSDAY FEB 26<sup>TH</sup> 2009</b>	<p>Depart Karasabai Brief stops at Tiperu, Rukumoto, Young Peru</p> <p>Arrive Monkey Mountain</p> <p><b>OVERNIGHT</b></p>	<p>07.30 hrs</p> <p>16.00 hrs</p>

<p><b>DAY 3 – FRIDAY FEB 27<sup>TH</sup>, 2009</b></p>	<p>Depart Monkey Mountain Brief stops at Tuseneng, Bamboo Creek, Paramakatoi</p> <p>Arrive Kato</p> <p><b>OVERNIGHT</b></p>	<p>07.00 hrs</p> <p>16.00 hrs</p>
<p><b>DAY 4 – SATURDAY FEB 28<sup>TH</sup>, 2009</b></p>	<p>Depart Kato Brief stops at Kurukubaru, Itabac, Kanapang</p> <p>Arrive Orinduik</p> <p><b>OVERNIGHT</b></p>	<p>07.00 hrs</p> <p>12.00 hrs</p>
<p><b>DAY 5 – SUNDAY MAR 1<sup>ST</sup> , 2009</b></p>	<p>Team 2 arrive from Georgetown having stopped at Kaieteur Falls</p> <p>Team 1 depart Via Chartered Flight to Kaieteur Falls on way to Georgetown.</p> <p><b>OVERNIGHT</b></p>	<p>12.30 hrs</p> <p>13.00 hrs</p>

<p><b>DAY 6 – MONDAY MAR 2<sup>nd</sup>, 2009</b></p>	<p>Depart Orinduik Brief stops at Kurukubaru, Itabac, Kanapang, Kato</p> <p>Arrive Monkey Mountain</p> <p><b>OVERNIGHT</b></p>	<p>10.00 hrs</p> <p>16.00 hrs</p>
<p><b>DAY 7 – TUESDAY MAR 3<sup>rd</sup>, 2009</b></p>	<p>Depart Monkey Mountain</p> <p>Arrive Karasabai</p> <p><b>OVERNIGHT</b></p>	<p>08.00 hrs</p> <p>14.00 hrs</p>
<p><b>DAY 8 – WEDNESDAY MARCH 4<sup>TH</sup>, 2009</b></p>	<p>Vehicles depart for Georgetown</p>	<p>07.00 hrs</p> <p>18.00 hrs</p>

## **REQUIREMENTS FOR TRIP**

### **CAMPING EQUIPMENT**

- ❖ Camping tent and battery light (12 volts) Q-Beam
- ❖ Blanket
- ❖ Insect repellent
- ❖ Torchlight (with extra batteries)
- ❖ Personal belongings such as warm clothing, toothpaste, toothbrush, soap, deodorant, etc.
- ❖ Personal medical kit,

GUYANA INTEGRATED NATURAL RESOURCES INFORMATION SYSTEM (GINRIS)

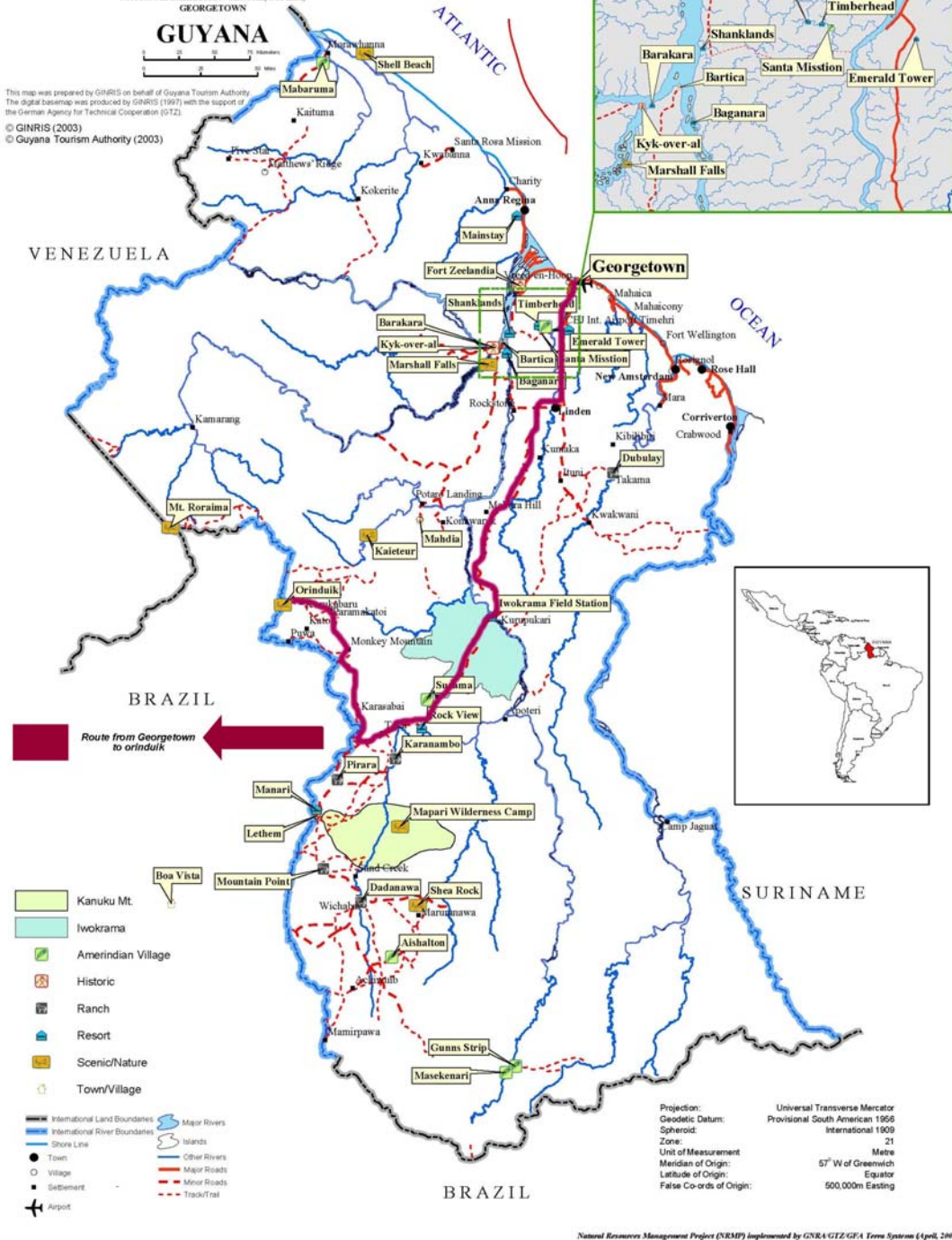
# TOURISM DESTINATIONS GUYANA TOURISM AUTHORITY

NATIONAL EXHIBITION CENTRE, SOPHIA,  
GEORGETOWN

## GUYANA



This map was prepared by GINRIS on behalf of Guyana Tourism Authority  
The digital base map was produced by GINRIS (1997) with the support of  
the German Agency for Technical Cooperation (GTZ).  
© GINRIS (2003)  
© Guyana Tourism Authority (2003)



- Kanuku Mt.
- Iwokrama
- Amerindian Village
- Historic
- Ranch
- Resort
- Scenic/Nature
- Town/Village

- International Land Boundaries
- International River Boundaries
- Shore Line
- Town
- Village
- Settlement
- Airport
- Major Rivers
- Other Rivers
- Major Roads
- Minor Roads
- Track/Trail
- Islands

Projection: Universal Transverse Mercator  
Geodetic Datum: Provisional South American 1956  
Spheroid: International 1909  
Zone: 21  
Unit of Measurement: Meter  
Meridian of Origin: 57° W of Greenwich  
Latitude of Origin: Equator  
False Co-ords of Origin: 500,000m Easting

Natural Resources Management Project (NRM) implemented by GINRA/GTZ/GFA Term System (April, 2003).



